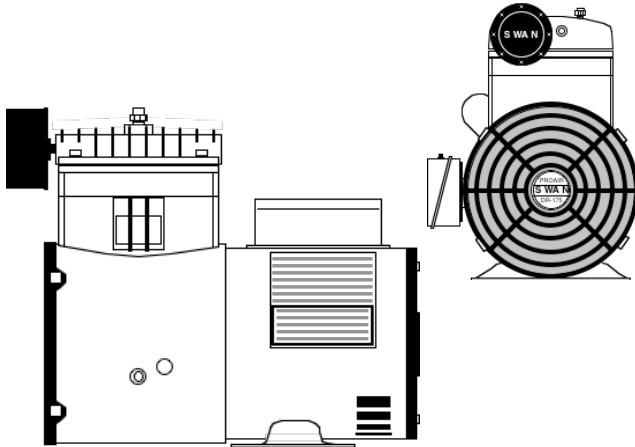
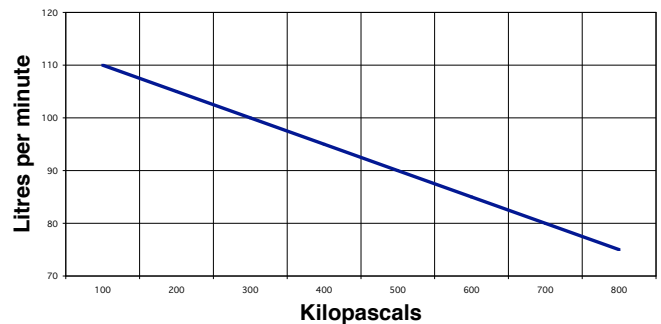


SWAN model DR-175 Single stage OIL FREE 1 cyl. air cooled

Rev.
No. CS0308-DR175



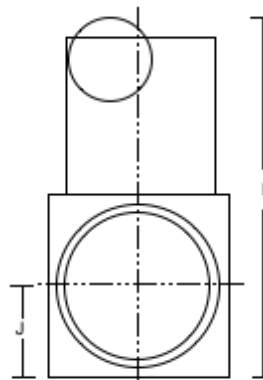
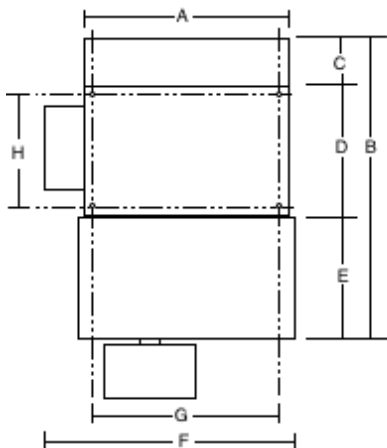
DR-175 PERFORMANCE



Main Construction Material	Alloy
Bore	mm 70
Stroke	mm 22
Minimum Speed	rpm 450
Normal Speed	rpm 1450
Maximum Speed	rpm 1690
Minimum Working Pressure	kPa 275
Maximum Working Pressure	kPa 800
Minimum Ambient Temperature	Celsius 0°
Maximum Ambient Temperature	Celsius 45°
Air Connection Comp. Fitting	mm 10
Air Cleaners	Dry foam Type
Bore Lubrication	P.T.F.E / Graphite
Oil Capacity of Crankcase	N/A
Type of Drive	Direct
Approximate Net Weight	kgs 8
Rotation Looking at Flywheel	Anti-clockwise

The following are at normal speed with an ambient temperature of 31.1°C & inlet air of 101 kPa g pressure.

Piston Displacement	L/min	122
Free Air Delivery @ 689 kPa	L/min	84
Shaft Input:		
@ 415 kPa	kW	0.52
@ 551 kPa	kW	0.53
@ 689 kPa	kW	0.54
@ 800 kPa	kW	0.55
Temperature of Air Discharge:		
@ 415 kPa	Celsius	107°
@ 551 kPa	Celsius	119°
@ 689 kPa	Celsius	128°
@ 800 kPa	Celsius	134°
Motor Power	kW	0.75
Motor Power Supply	Volts	240
Noise Level at 1 metre	dB(A)	75



A	220 mm
B	305 mm
C	45 mm
D	100 mm
E	123 mm
F	175 mm
G	140 mm
H	75 mm
I	280 mm
J	85 mm

Forbes (Aust) Pty Ltd reserves the right to change the specifications of any of its products without prior notice