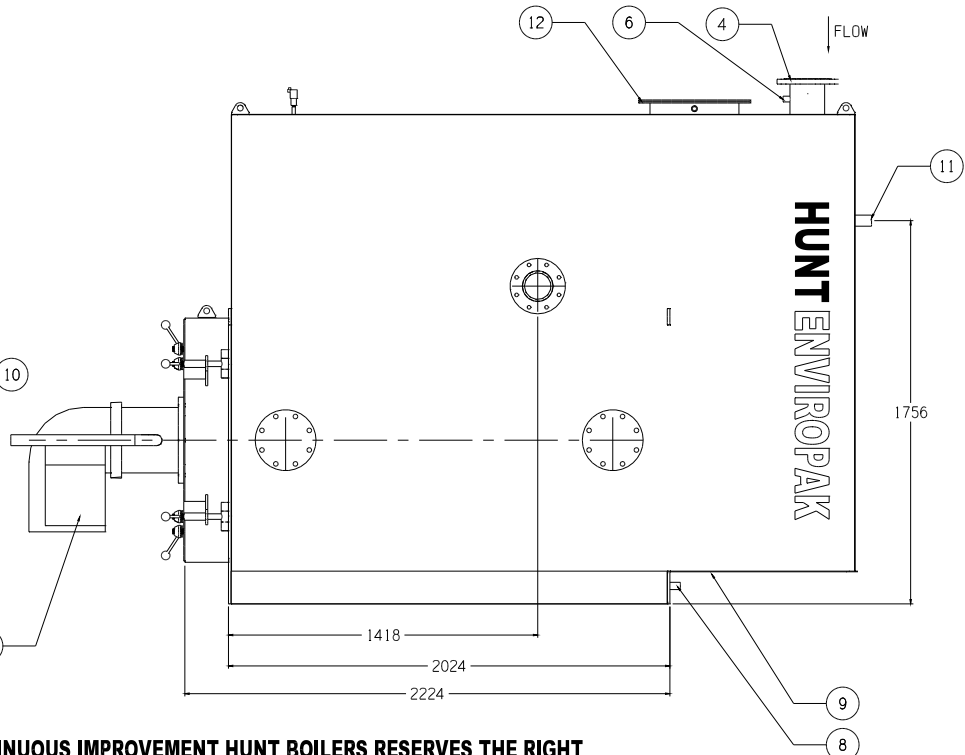
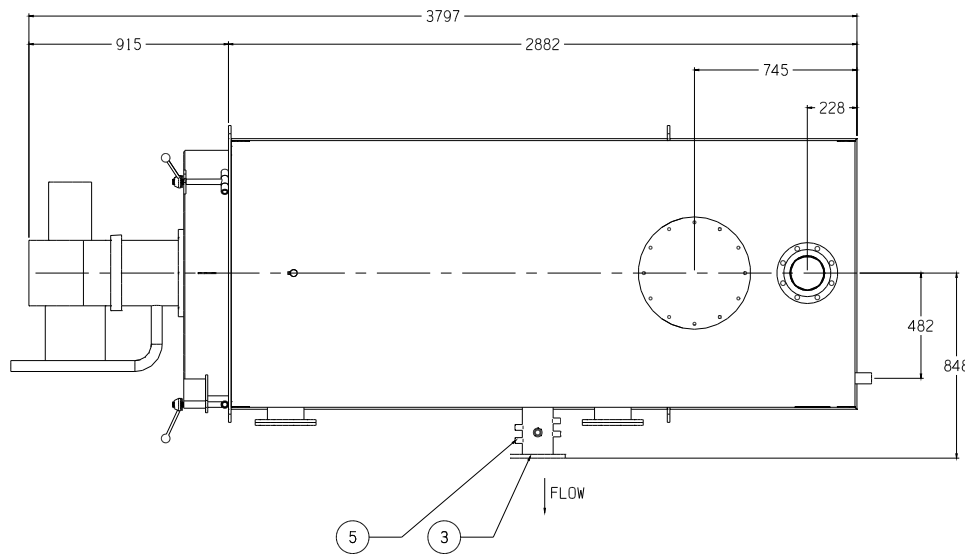


**FLUE FLANGE DETAIL**



**IN THE INTEREST OF CONTINUOUS IMPROVEMENT HUNT BOILERS RESERVES THE RIGHT TO CHANGE THE SPECIFICATIONS OF IT'S PRODUCTS WITHOUT PRIOR NOTICE.**



**SPECIFICATIONS:**

HUNT ENVIROPAK SERIES  
HOT WATER CONDENSING BOILER  
MODEL : H-ENV-700 (700KW)  
DESIGN REFERENCE: AS1210-1997 (3)  
CLASS: 3

DEIGNATION NUMBER: AS1210-3  
OUTPUT CAPACITY: 700 kW  
MAX. OPERATING TEMPERATURE: 99°C  
MAX. OPERATING PRESSURE: 540 kPa  
DESIGN PRESSURE: 570 kPa  
TEST PRESSURE: 855 kPa  
INPUT: \* 2889 MEGAJOULES/hr  
OUTPUT: 2520 MEGAJOULES/hr  
WATER CONTENT: 1200 LITRES  
DRY WEIGHT: 2025 kg

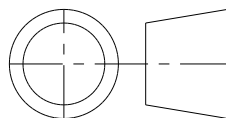
HAZARD LEVEL TO AS4343-2005	
OPEN VENTED	"E"
>65°C <90°C	"D"
>90°C <100°C	"C"

WATER FLOW RATE Kg/sec	ΔT10°C	17.09	*
		9.4	
WATER PRESSURE DROP kPa	ΔT15°C	11.40	*
	ΔT20°C	4.74	
		8.55	
		2.6	

\* = BASED ON 65°C WATER INLET TO 80° WATER OUTLET

12	FLUE CONNECTION	FLANGE	SEE DETAIL	400 ID	1
11	RECOVERY CONDENSATE	STUB	-	50mm	1
10	INSPECTION OPENINGS	FLANGE	TABLE "E"	150NB	2
9	HEATER CONDENSATE	STUB	BSP	25NB	1
8	DRAIN CONNECTION	STUB	BSP	25NB	1
7	LOW LEVEL PROBE CON	STUB	BSP	32NB	1
6	TEMPERATURE GAUGE	BIMETAL	0-150°C		1
5	PRESSURE GAUGE	BOURDON	0-1000kPa		1
4	RETURN CONNECTION	FLANGE	ANSI 150	150NB	1
3	FLOW CONNECTION	FLANGE	ANSI 150	150NB	1
2	SAFETY VALVE	BRONZE	FULL LIFT	25NB	1
1	BURNER	FORCED DRAFT	GUN		1
ITEM	DESCRIPTION	TYPE	STYLE	SIZE	QTY

REV	REVISION NOTE	DATE	CKD
A	ORIGINAL ISSUE	07/11/08	



THIRD ANGLE PROJECTION

**HUNT BOILERS**  
A Division of Forbes (Aust) Pty Ltd

THIS DRAWING WAS PREPARED BY HUNT BOILERS. THE INFORMATION IT CONTAINS IS CONFIDENTIAL AND MUST NOT BE USED, DISCLOSED OR REPRODUCED WITHOUT WRITTEN AUTHORITY.

AUSTRALIAN MADE = AUSTRALIAN JOBS

ALL DIMENSIONS IN MILLIMETERS	DRAWN: P.C.H.	DESCRIPTION: HUNT ENVIROPAK 700 (700KW) HOT WATER CONDENSING BOILER DESIGN REG. SD 05066-1
DO NOT SCALE THIS DRAWING	DATE: 07/11/08	
COMPUTER AIDED DRAFT	CHECKED: ***	DRAWING No: H-ENV-700 GA