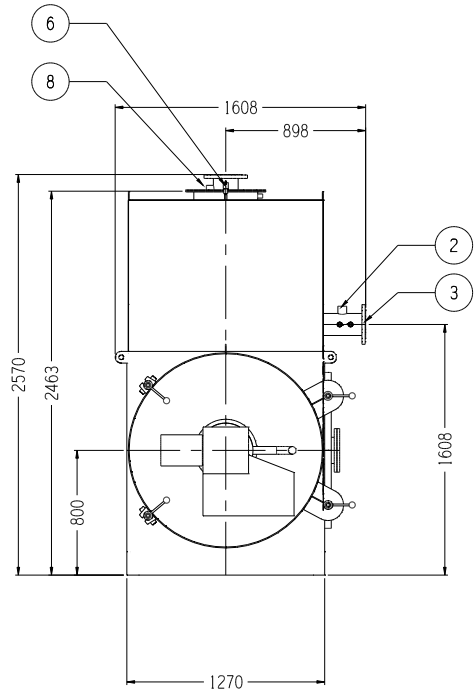


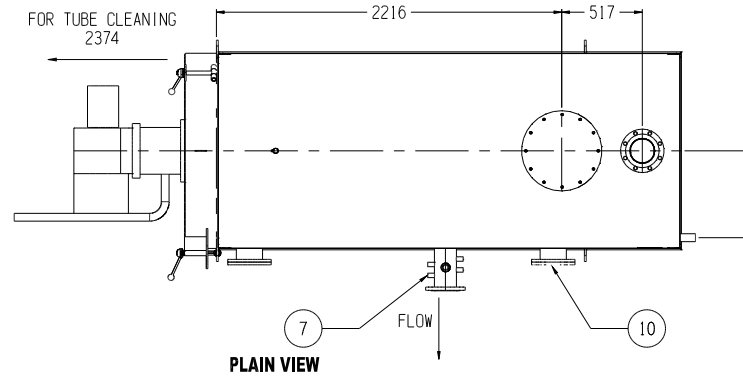
12 HOLES Ø14 ON 465 PCD

DETAIL: FLUE FLANGE

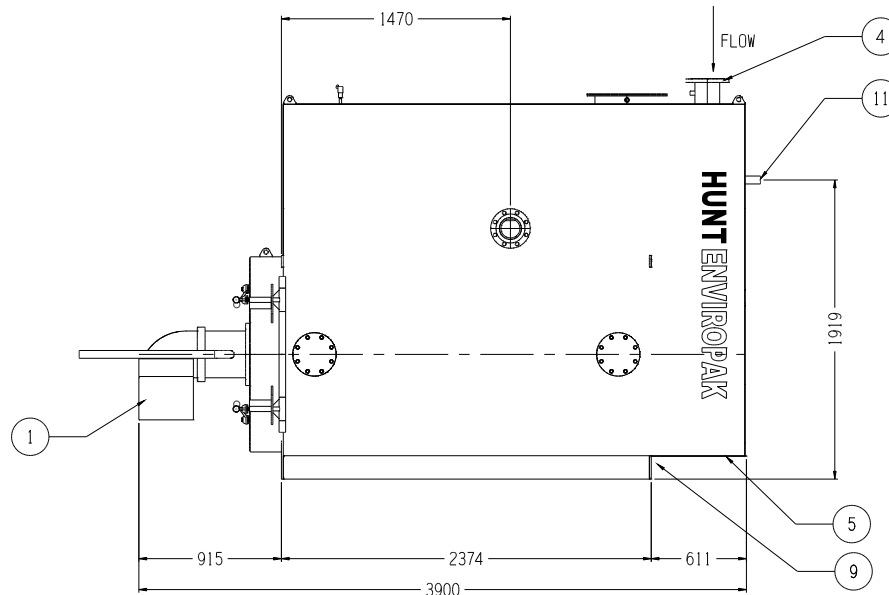
NOTE:
NO VERTICAL LOADS PERMITTED
ALL FLUES MUST BE SELF SUPPORTING



FRONT ELEVATION



PLAIN VIEW



SIDE ELEVATION

IN THE INTEREST OF CONTINUOUS IMPROVEMENT HUNT BOILERS RESERVES THE RIGHT TO CHANGE THE SPECIFICATIONS OF ITS PRODUCTS WITHOUT PRIOR NOTICE.



SPECIFICATIONS:

HUNT ENVIRPAK SERIES
HOT WATER CONDENSING BOILER
MODEL: H-ENV-950 (950KW)
DESIGN REFERENCE: AS1210-1997 (3)
CLASS: 3

DEIGNATION NUMBER:	AS1210-3
OUTPUT CAPACITY:	950 kW
MAX. OPERATING TEMPERATURE:	99°C
MAX. OPERATING PRESSURE:	570 kPa
DESIGN PRESSURE:	600 kPa
TEST PRESSURE:	900 kPa
INPUT:	* 3921 MEGAJOULES/hr
OUTPUT:	3420 MEGAJOULES/hr
WATER CONTENT:	1423 LITRES
DRY WEIGHT:	2350 kg

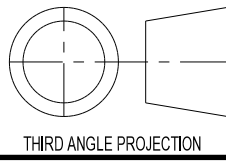
HAZARD LEVEL TO AS4343-2005	
OPEN VENTED	"E"
>65°C <90°C	"D"
≥90°C <100°C	"C"

WATER FLOW RATE LITRES/sec	ΔT10°C	23.19
		13.3
WATER PRESSURE DROP kPa	ΔT15°C	15.48
		6.30
	ΔT20°C	11.61
		3.0

* = BASED ON 65°C WATER INLET TO 80°C WATER OUTLET

12	FLUE CONNECTION	FLANGED	SEE DETAIL	400 ID	1
11	RECOVERY CONDENSATE	STUB	-	50mm	1
10	INSPECTION OPENINGS	FLANGE	TABLE 'E'	150NB	2
9	DRAIN CONNECTION	STUB	BSP	25NB	1
8	LOW LEVEL PROBE CON	STUB	BSP	32NB	1
7	TEMPERATURE GAUGE	BIMETAL	0-150°C		1
6	PRESSURE GAUGE	BOURDON	0-1000kPa		1
5	HEATER CONDENSATE	STUB	BSP	20NB	1
4	RETURN CONNECTION	FLANGE	ANSI 150	150NB	1
3	FLOW CONNECTION	FLANGE	ANSI 150	150NB	1
2	SAFETY VALVE	BRONZE	FULL LIFT	32NB	1
1	BURNER	FORCED DRAFT	GUN		1
ITEM	DESCRIPTION	TYPE	STYLE	SIZE	QTY

REV	REVISION NOTE	DATE	CKD
A	ORIGINAL ISSUE	08/12/08	



THIRD ANGLE PROJECTION

HUNT BOILERS
A Division of Forbes (Aust) Pty Ltd

THIS DRAWING WAS PREPARED BY HUNT BOILERS. THE INFORMATION IT CONTAINS IS CONFIDENTIAL AND MUST NOT BE USED, DISCLOSED OR REPRODUCED WITHOUT WRITTEN AUTHORITY.

ALL DIMENSIONS IN MILLIMETERS	DRAWN: P.C.H.	DESCRIPTION: H-ENV-950 (950KW) HOT WATER CONDENSING BOILER DESIGN REG. # SD20060506-1
DO NOT SCALE THIS DRAWING	DATE: 08/12/08	
COMPUTER AIDED DRAFT	CHECKED: ***	DRAWING No: H-ENV-950 GA