



FORBES-BRYAN

'flexible'

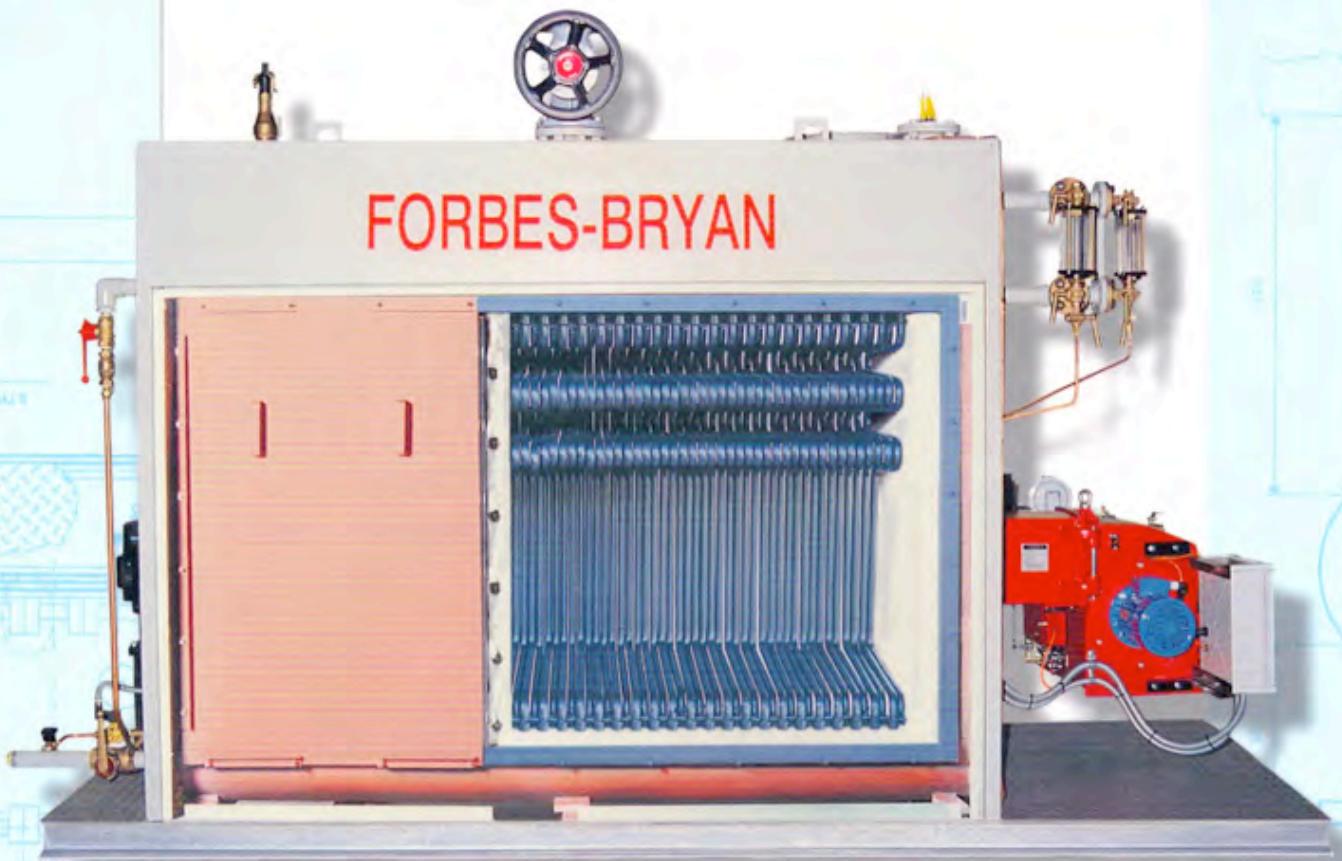
AUTOMATIC PACKAGED BOILER



The FORBES-BRYAN *'flexible'* range of water tube steam boilers represent a range of energy efficient products which are manufactured in Australia to fully meet the requirements of the demanding steam industry.

They incorporate world leading technology, provided through an agreement with the Bryan Steam Corporation in the U.S.A., that combined with the many other features includes a unique ability to be able to replace individual tubes in less that 30 minutes.

ADVANCED TECHNOLOGY • HIGH EFFICIENCY • COST EFFECTIVE • HIGH RELIABILITY • EASY MAINTENENCE

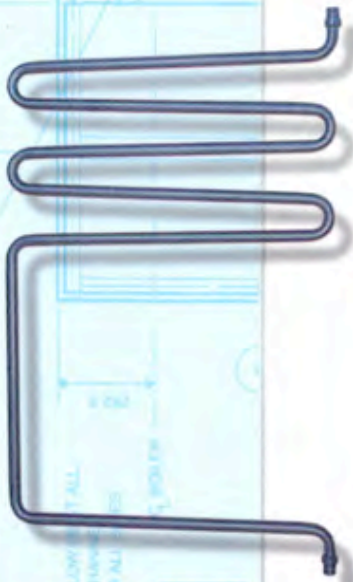


The **FORBES-BRYAN** *'flexible'* range of water tube boilers, designed and manufactured in accordance with all relevant Australian Standards including AS1228, AS4458, AS2593 and AS3920.1, are suitable for a maximum design pressure of 1,100 kPa and have been approved for installation and operation throughout Australia.

They are suitable for the provision of high quality steam or high temperature hot water to a wide range of applications including:

- Hospitals and medical sterilisation
- Food and beverage processing
- Clothing and textiles manufacture
- Pharmaceutical and cosmetic processing
- Industrial process heating
- Dry cleaning and laundries

Being a full **'package'** product they are supplied complete with controls suitable for 'unattended' operation in relation to the requirements of AS2593 including full mimic panel, burner and gas train (and/or oil burner and pump), main steam valve, feed water pump and manual blow down valve. All components utilised in the assembly of the product have been selected based on their quality and durability, so you can be assured of a quality solution to your steam or hot water requirements.



SECTION A-A

The FORBES-BRYAN 'flexible'
RANGE OF WATER TUBE BOILERS HAS MANY FEATURES INCLUDING:

• **'flexible' TUBE DESIGN**

The exclusive 'flexible' tube design promotes high velocity internal circulation for maximum heat transfer and improved boiler efficiency. Tubes are easily removed and replaced without welding or beading, eliminating long and expensive downtime should repairs ever be required.

• **RAPID NATURAL THERMAL INTERNAL CIRCULATION**

Each pass of the 'flexible' tubes slope upward which ensures, when combined with the large downcomer water legs, rapid natural thermal internal circulation, promoting both high efficiency of heat transfer and uniform temperature throughout the boiler.

• **COMPACT DESIGN**

The compact water tube design ensures that the overall size of the product is minimised, whilst still achieving substantial heating surface to steam output ratios.

• **MULTI-PASS FLUE GAS TRAVEL**

High velocity four pass flue gas travel is achieved through a unique stainless steel baffling system, ensuring that optimum heat recovery is transferred to maximise efficiency.

• **ACCESSIBILITY FOR SERVICE AND INSPECTION**

Removable access panels on one side of the boiler enable easy and complete access to the furnace, boiler tubes and the burner head. This allows for more cost effective and complete inspection and service to be made to these areas, ultimately minimising down time.

• **LARGE WATER VOLUMES AND STEAM SPACE**

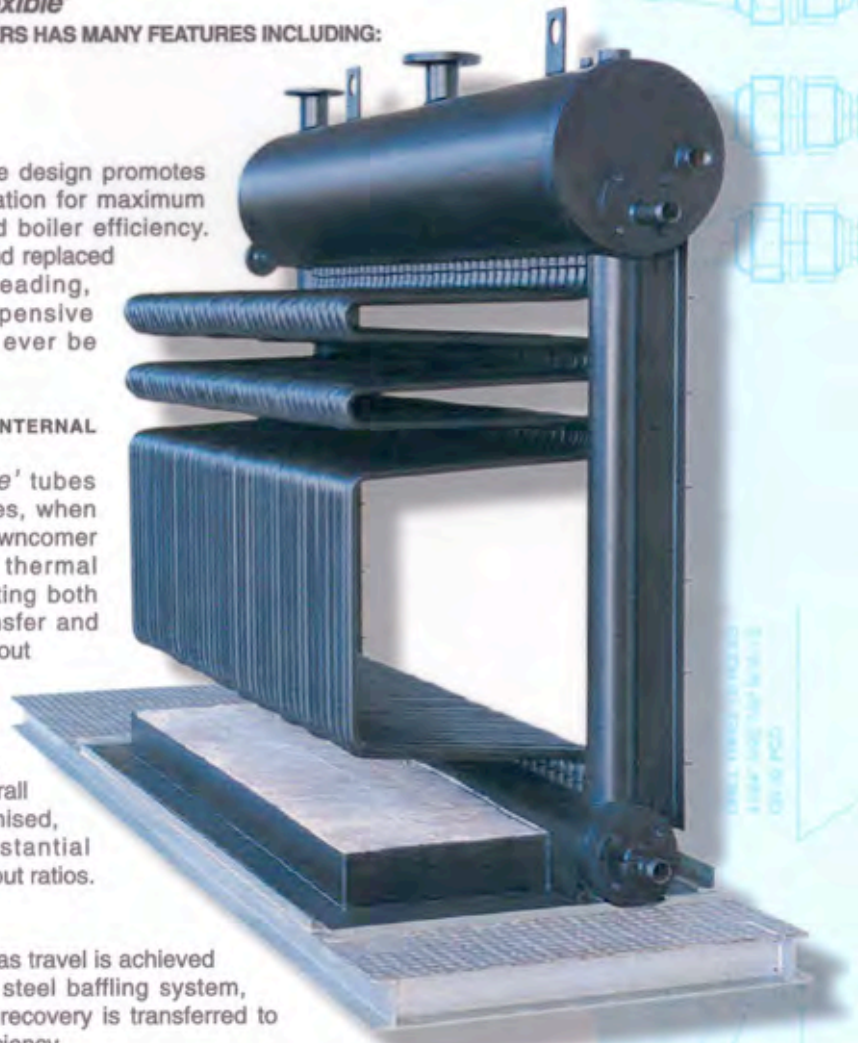
Being a horizontal water tube design, the steam drums have large water volume and steam spaces which, when combined with a specially engineered steam baffle, results in a stable water level and the production of dry steam under all normal operating conditions.

• **EFFICIENT HEAT UTILISATION**

The configuration of the 'flexible' tubes provides a water cooled combustion chamber with a high percentage of the heating surface exposed to direct radiant heat. This exposure increases water velocities and heat transfer, ensuring efficient heat utilisation.

• **MOISTURE PROTECTION AND SURFACE FINISH**

Boiler base frames are hot dipped galvanised and all external panels are prepared with a two pack primer, followed by the application of a suitable high temperature enamel.



ADELAIDE

599 Port Road, West Croydon SA 5008
 Ph: 61 8 8268 8877 Fax: 61 8 8347 1311

SYDNEY (Hunt Boilers)

4/38 Powers Road, Seven Hills NSW 2147
 Ph: 61 2 9674 1255 Fax: 61 2 9674 1877

MELBOURNE

49 Lambeck Drive, Tullamarine Vic 3043
 Ph: 61 3 8336 1100 Fax: 61 3 8336 1177

BRISBANE (Hunt Boilers)

10/37 Mortimer Road, Acacia Ridge Qld 4110
 Ph: 61 7 3277 4730 Fax: 61 7 3277 9730

MELBOURNE (Hunt Boilers)

11 Helen Kob Drive, Braeside VIC 3195
 Ph: 61 3 9580 9377 Fax: 61 3 9580 9411

PERTH (Hunt Boilers)

1/14 Baling Street, Cockburn Central WA 6164
 Ph: 61 8 9414 8787 Fax: 61 8 9414 8383