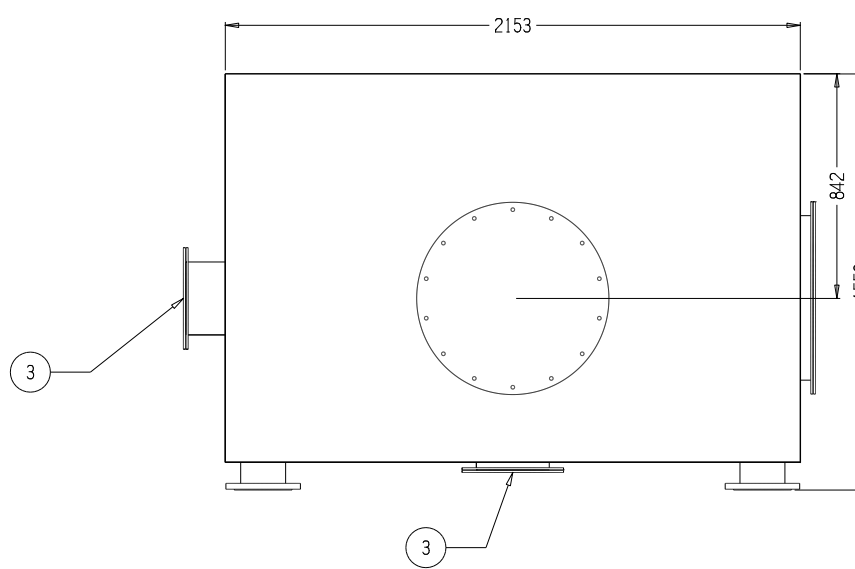


STACK FLANGE DETAIL

14 HOLES  
Ø14 ON  
665 PCD

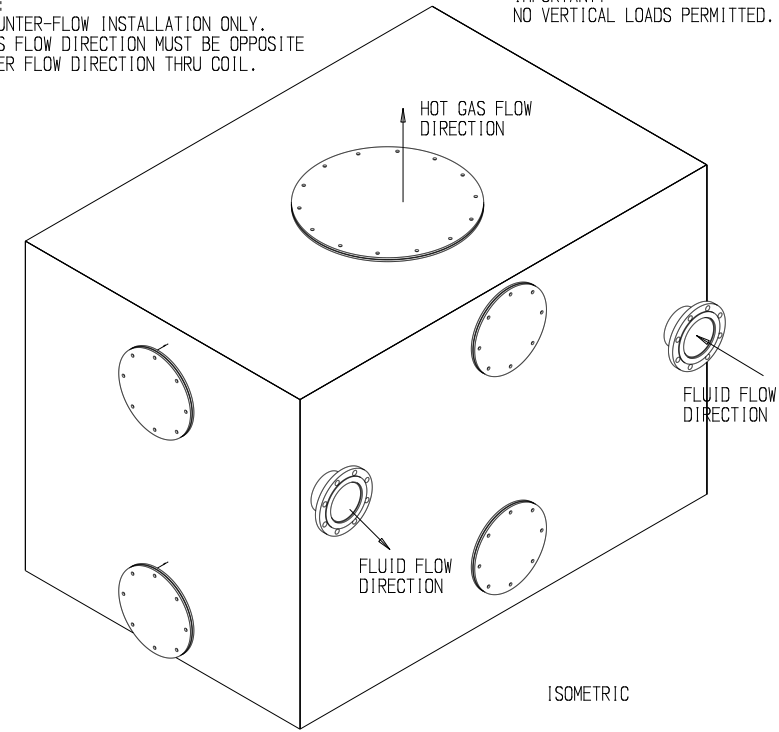
ATTACHING STACK CAN BE  
CUT DIRECTLY INTO  
BLANK FLANGE

NOTE 1:  
DESIGN CODE: AS1210-1997(3)  
DESIGN CLASS: 3  
MAXIMUM DESIGN TEMPERATURE: 200°C  
MAXIMUM DESIGN PRESSURE: 1500 kPa  
FLOODED VOLUME: 230 LITRES  
HAZARD LEVEL: "D"  
TRANSPORT MASS: 830 KGS

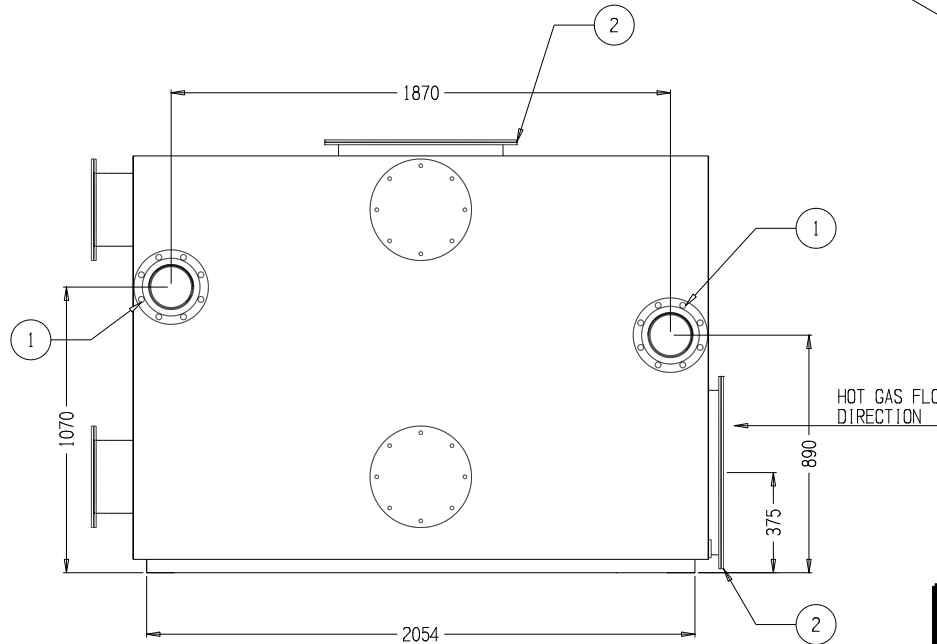
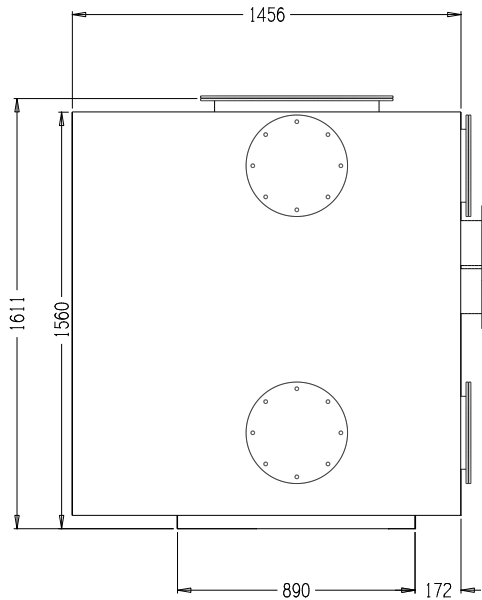


NOTE 2:  
FOR COUNTER-FLOW INSTALLATION ONLY.  
ie: GAS FLOW DIRECTION MUST BE OPPOSITE  
TO WATER FLOW DIRECTION THRU COIL.

IMPORTANT:  
NO VERTICAL LOADS PERMITTED.



ISOMETRIC



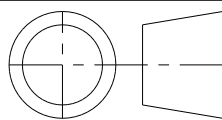
SHOWN OPPOSITE HAND TO STANDARD

HEATER OUTPUT kW	FLUID FLOWRATE L/sec	FLUID SIDE ΔP kPa	GAS SIDE ΔP mm/WG
2500	23.88	4.4	3.25
5000	119.44	111.3	10.69

APPROXIMATE INTERMEDIATE BACK PRESSURES  
CAN BE DERIVED THRU LINEAR INTERPOLATION

ITEM	DESCRIPTION	CONNECTION	QTY
5			
4	CONDENSATE DRAIN SOCKET	50 NB BSP THREAD	1
3	INSPECTION/WASHDOWN OPENINGS	Ø263 ID MAXIMUM	4
2	HOT GAS CONNECTION	Ø610 ID MAXIMUM	2
1	FLUID FLOW CONNECTION @ 200°C & 1400 kPa	150 NB ANSI 150	2

REV	REVISION NOTE	DATE	CKD
A	ORIGINAL ISSUE	17/09/07	



THIRD ANGLE PROJECTION

**HUNT BOILERS**

A Division of Forbes (Aust) Pty Ltd

THIS DRAWING WAS PREPARED BY HUNT BOILERS. THE INFORMATION IT CONTAINS IS CONFIDENTIAL AND MUST NOT BE USED, DISCLOSED OR REPRODUCED WITHOUT WRITTEN AUTHORITY.

ALL DIMENSIONS IN MILLIMETERS	DRAWN: P.C.H.	DESCRIPTION: HEAT RECOVERY CONDENSING UNIT MODEL: HRCU-15H TO SUIT: FROM 2400kW HEATER OUTPUT TO 5000kW HEATER OUTPUT
DO NOT SCALE THIS DRAWING	DATE: 17/09/07	
COMPUTER AIDED DRAFT	CHECKED: **	DRAWING No: HRCU-15H GA r