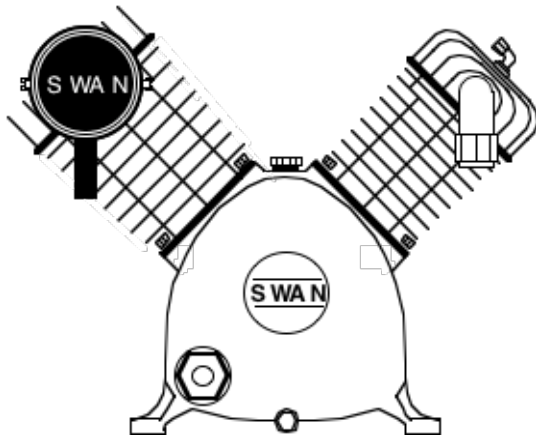
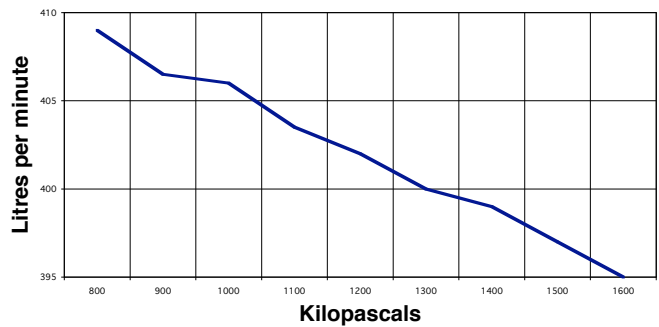


SWAN model HV-205 Two stage 2 cyl. air cooled

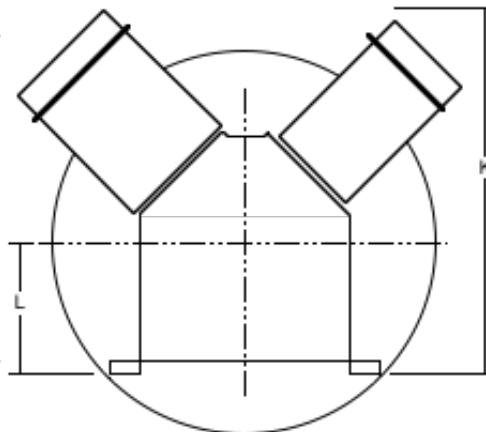
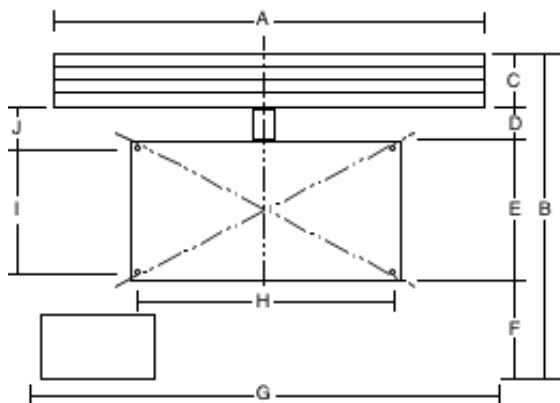
Rev.
No. CS0308-HV205



HV-205 PERFORMANCE



Main Construction Material	Cast Iron	<i>The following are at normal speed with an ambient temperature of 31.1°C & inlet air of 101 kPa g pressure.</i>			
Bore	mm	L95 H50.8	Piston Displacement	L/min	545
Stroke	mm	85	Free Air Delivery @ 1378 kPa	L/min	399
Minimum Speed	rpm	580	Shaft Input:		
Normal Speed	rpm	900	@ 1034 kPa	kW	3.23
Maximum Speed	rpm	1000	@ 1205 kPa	kW	3.41
Minimum Working Pressure	kPa	345	@ 1378 kPa	kW	3.57
Maximum Working Pressure	kPa	1725	@ 1550 kPa	kW	3.72
Minimum Ambient Temperature	Celsius	0°	Temperature of Air Discharge:		
Maximum Ambient Temperature	Celsius	45°	@ 1034 kPa	Celsius	122°
Air Connection Comp. Fitting	mm	20	@ 1205 kPa	Celsius	134°
Air Cleaners	Dry Paper Type		@ 1378 kPa	Celsius	142°
Bore Lubrication	Splash Feed		@ 1550 kPa	Celsius	152°
Oil Capacity of Crankcase	Litres	1.136	Maximum Lubricant Consumed		
Type of Drive	V-belt	3A	in 100 hours Operation	millilitres	131.78
Approximate Net Weight	kgs	64	Noise Level at 1 metre	dB(A)	83
Rotation Looking at Flywheel	Anti-clockwise				



A	400 mm
B	420 mm
C	65 mm
D	60 mm
E	180 mm
F	60 mm
G	585 mm
H	275 mm
I	130 mm
J	85 mm
K	450 mm
L	152 mm

Forbes (Aust) Pty Ltd reserves the right to change the specifications of any of its products without prior notice