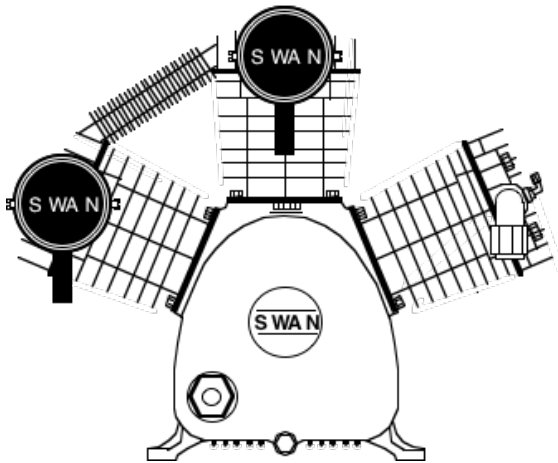
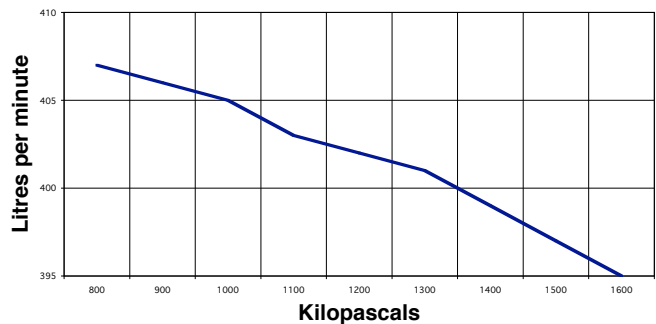


SWAN model HW-310 Two stage 3 cyl. air cooled

Rev.
No. CS0308-HW310

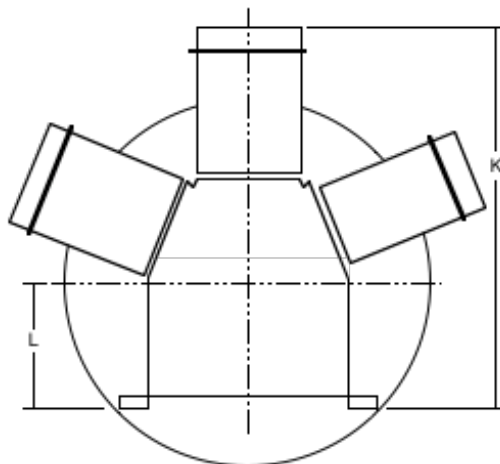
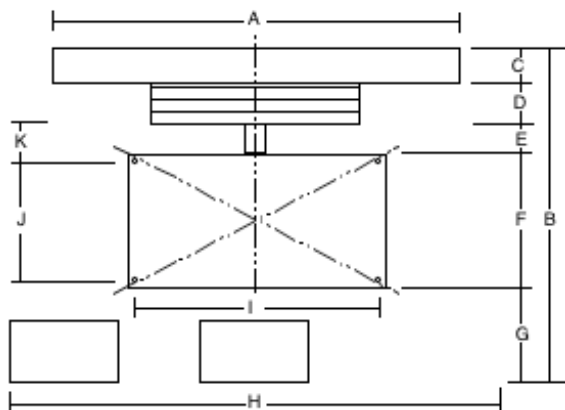


HW-310 PERFORMANCE



Main Construction Material	Cast Iron			
Bore	mm	L95 H77		
Stroke	mm	85		
Minimum Speed	rpm	630		
Normal Speed	rpm	870		
Maximum Speed	rpm	1000		
Minimum Working Pressure	kPa	345		
Maximum Working Pressure	kPa	1725		
Minimum Ambient Temperature	Celsius	0°		
Maximum Ambient Temperature	Celsius	45°		
Air Connection Comp. Fitting	mm	25		
Air Cleaners	Dry Paper Type			
Bore Lubrication	Splash Feed			
Oil Capacity of Crankcase	Litres	1.98		
Type of Drive	V-belt	3B		
Approximate Net Weight	kgs	92		
Rotation Looking at Flywheel	Anti-clockwise			

<i>The following are at normal speed with an ambient temperature of 31.1°C & inlet air of 101 kPa g pressure.</i>			
Piston Displacement	L/min		1048
Free Air Delivery @ 1378 kPa	L/min		765
Shaft Input:			
	@ 1034 kPa	kW	6.42
	@ 1205 kPa	kW	6.79
	@ 1378 kPa	kW	6.94
	@ 1550 kPa	kW	7.46
Temperature of Air Discharge:			
	@ 1034 kPa	Celsius	130°
	@ 1205 kPa	Celsius	142°
	@ 1378 kPa	Celsius	153°
	@ 1550 kPa	Celsius	162°
Maximum Lubricant Consumed			
	in 100 hours Operation	millilitre	261.28
Noise Level at 1 metre		dB(A)	85



A	500 mm
B	500 mm
C	75 mm
D	80 mm
E	215 mm
F	40 mm
G	670 mm
H	275 mm
I	180 mm
J	100 mm
K	540 mm
L	180 mm

Forbes (Aust) Pty Ltd reserves the right to change the specifications of any of its products without prior notice