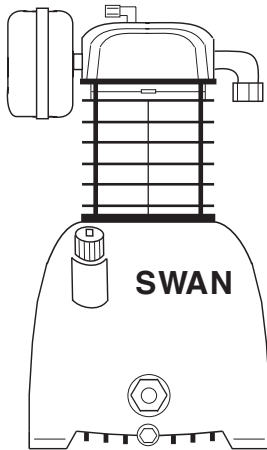
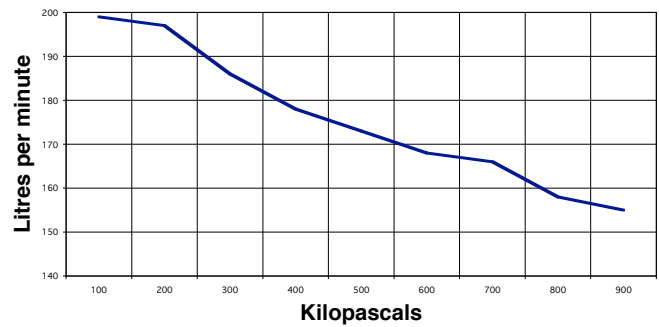


SWAN model S-101 Single stage 1 cyl. air cooled

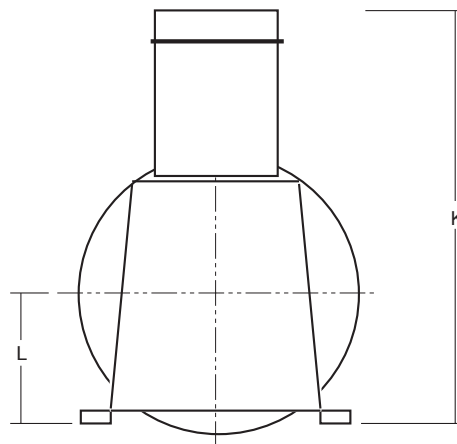
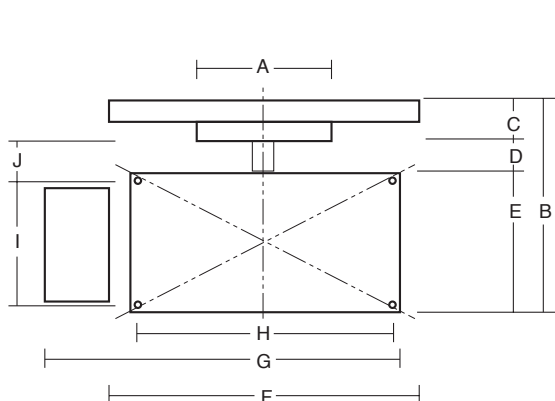
Rev. No. CS0308-S101



S-101 PERFORMANCE



Main Construction Material	Cast Iron	<i>The following are at normal speed with an ambient temperature of 31.1°C & inlet air of 101 kPa g pressure.</i>			
Bore	mm	65	Piston Displacement	L/min	221
Stroke	mm	44	Free Air Delivery @ 689 kPa	L/min	166
Minimum Speed	rpm	650	Shaft Input:		
Normal Speed	rpm	1500	@ 415 kPa	kW	0.85
Maximum Speed	rpm	1500	@ 551 kPa	kW	0.95
Minimum Working Pressure	kPa	275	@ 689 kPa	kW	1.08
Maximum Working Pressure	kPa	964	@ 964 kPa	kW	1.22
Minimum Ambient Temperature	Celsius	0°	Temperature of Air Discharge:		
Maximum Ambient Temperature	Celsius	45°	@ 415 kPa	Celsius	92°
Air Connection Comp. Fitting	mm	12.7	@ 551 kPa	Celsius	98°
Air Cleaners	Dry Fibre Type		@ 689 kPa	Celsius	106°
Bore Lubrication	Splash Feed		@ 964 kPa	Celsius	132°
Oil Capacity of Crankcase	Litres	0.375	Maximum Lubricant Consumed		
Type of Drive	V-belt	1A	in 100 hours Operation	millilitre	13.69
Approximate Net Weight	kgs	16	Noise Level at 1 metre	dB(A)	79
Rotation Looking at Flywheel	Anti-clockwise				



A	150 mm
B	255 mm
C	60 mm
D	49 mm
E	126 mm
F	280 mm
G	220 mm
H	170 mm
I	105 mm
J	60 mm
K	370 mm
L	110 mm

Forbes (Aust) Pty Ltd reserves the right to change the specifications of any of its products without prior notice