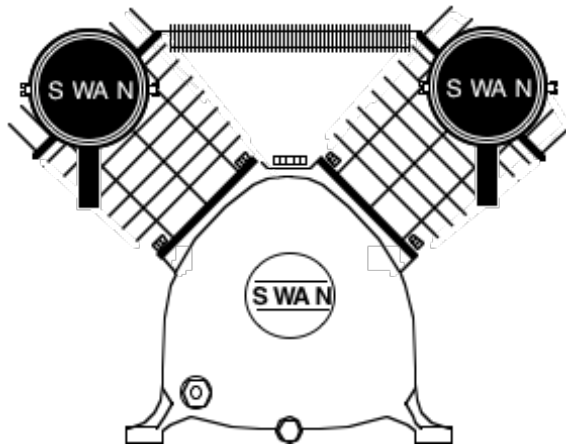
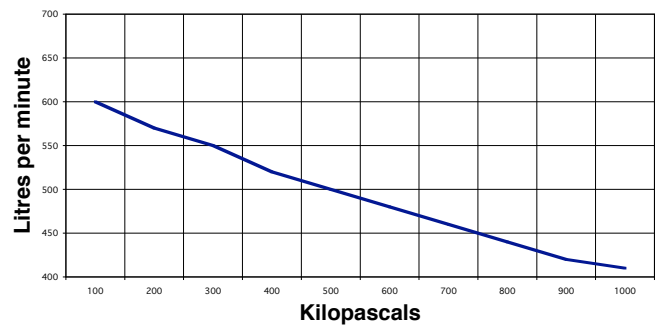


### SWAN model SV-203 Single stage 2 cyl. air cooled

Rev.  
No. CS0308-SV203



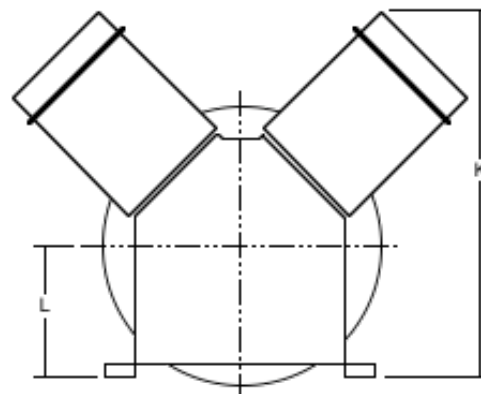
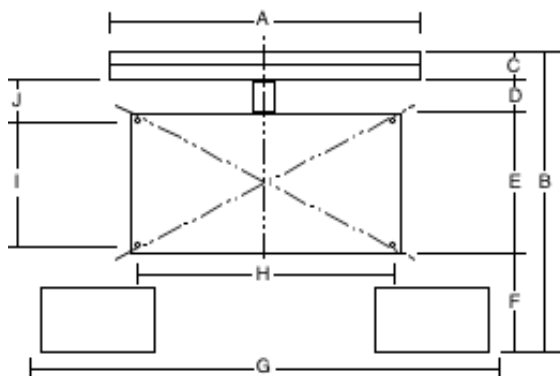
### SV-203 PERFORMANCE



Main Construction Material	Cast Iron			
Bore	mm	82		
Stroke	mm	70		
Minimum Speed	rpm	460		
<b>Normal Speed</b>	<b>rpm</b>	<b>830</b>		
Maximum Speed	rpm	1000		
Minimum Working Pressure	kPa	275		
Maximum Working Pressure	kPa	964		
Minimum Ambient Temperature	Celsius	0°		
Maximum Ambient Temperature	Celsius	45°		
Air Connection Comp. Fitting	mm	20		
Air Cleaners	Dry Paper Type			
Bore Lubrication	Splash Feed			
Oil Capacity of Crankcase	Litres	0.910		
Type of Drive	V-belt	2A		
Approximate Net Weight	kgs	50		
Rotation Looking at Flywheel	Anti-clockwise			

<i>The following are at normal speed with an ambient temperature of 31.1°C &amp; inlet air of 101 kPa g pressure.</i>				
Piston Displacement	L/min	613		
Free Air Delivery @ 689 kPa	L/min	460		
Shaft Input:				
	@ 415 kPa	kW	2.27	
	@ 551 kPa	kW	2.53	
	@ 689 kPa	kW	2.75	
	@ 964 kPa	kW	3.07	
Temperature of Air Discharge:				
	@ 415 kPa	Celsius	112°	
	@ 551 kPa	Celsius	122°	
	@ 689 kPa	Celsius	130°	
	@ 964 kPa	Celsius	155°	
Maximum Lubricant Consumed				
	in 100 hours Operation	millilitre	32.95	
Noise Level at 1 metre		dB(A)	82	



A	290 mm
B	400 mm
C	50 mm
D	20 mm
E	185 mm
F	95 mm
G	550 mm
H	258 mm
I	135 mm
J	45 mm
K	410 mm
L	125 mm

Forbes (Aust) Pty Ltd reserves the right to change the specifications of any of its products without prior notice