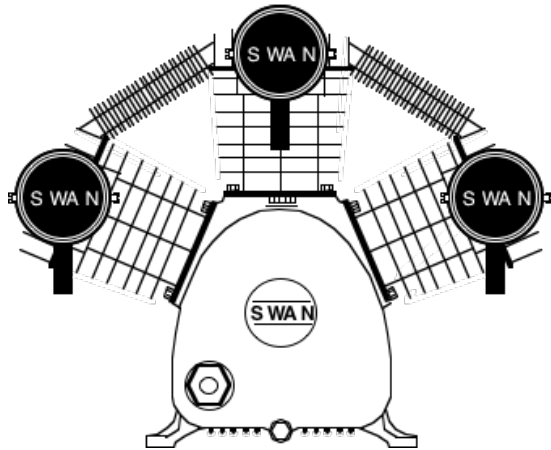
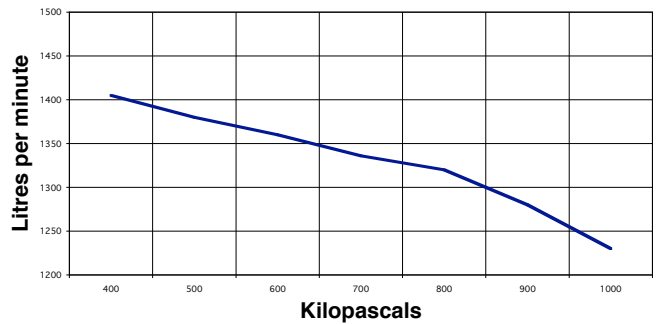


SWAN model SW-310 Single stage 3 cyl. air cooled

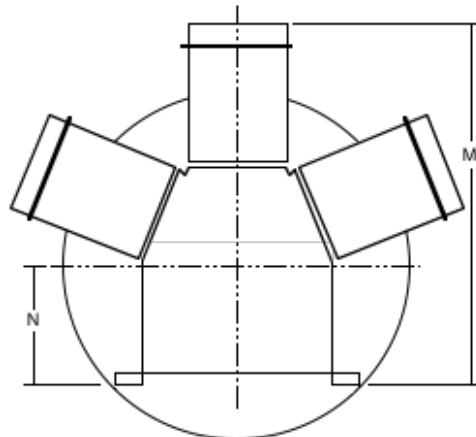
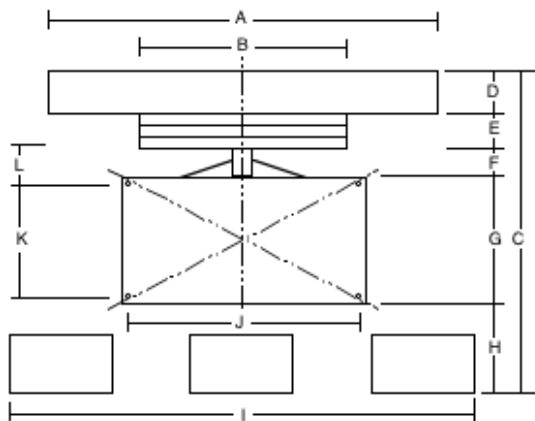
Rev.
No. CS0308-SW310



SW-310 PERFORMANCE



| | | | | | |
|-----------------------------------|----------------|---|-------------------------------|------------|--------|
| Main Construction Material | Cast Iron | <i>The following are at normal speed with an ambient temperature of 31.1°C & inlet air of 101 kPa g pressure.</i> | | | |
| Bore | mm | 95 | Piston Displacement | L/min | 1807 |
| Stroke | mm | 85 | Free Air Delivery @ 689 kPa | L/min | 1336 |
| Minimum Speed | rpm | 690 | Shaft Input: | | |
| Normal Speed | rpm | 1000 | @ 415 kPa | kW | 6.46 |
| Maximum Speed | rpm | 1110 | @ 551 kPa | kW | 7.36 |
| Minimum Working Pressure | kPa | 275 | @ 689 kPa | kW | 8.33 |
| Maximum Working Pressure | kPa | 964 | @ 964 kPa | kW | 9.88 |
| Minimum Ambient Temperature | Celsius | 0° | Temperature of Air Discharge: | | |
| Maximum Ambient Temperature | Celsius | 45° | @ 415 kPa | Celsius | 120° |
| Air Connection Comp. Fitting (x2) | mm | 25 | @ 551 kPa | Celsius | 131° |
| Air Cleaners | Dry Paper Type | | @ 689 kPa | Celsius | 140° |
| Bore Lubrication | Splash Feed | | @ 964 kPa | Celsius | 154° |
| Oil Capacity of Crankcase | Litres | 2.280 | Maximum Lubricant Consumed | | |
| Type of Drive | V-belt | 3B | in 100 hours Operation | millilitre | 186.87 |
| Approximate Net Weight | kgs | 94 | Noise Level at 1 metre | dB(A) | 85 |
| Rotation Looking at Flywheel | Anti-clockwise | | | | |



| | |
|---|--------|
| A | 560 mm |
| B | 250 mm |
| C | 520 mm |
| D | 60 mm |
| E | 67 mm |
| F | 65 mm |
| G | 215 mm |
| H | 53 mm |
| I | 670 mm |
| J | 275 mm |
| K | 180 mm |
| L | 100 mm |
| M | 540 mm |
| N | 180 mm |

Forbes (Aust) Pty Ltd reserves the right to change the specifications of any of its products without prior notice