

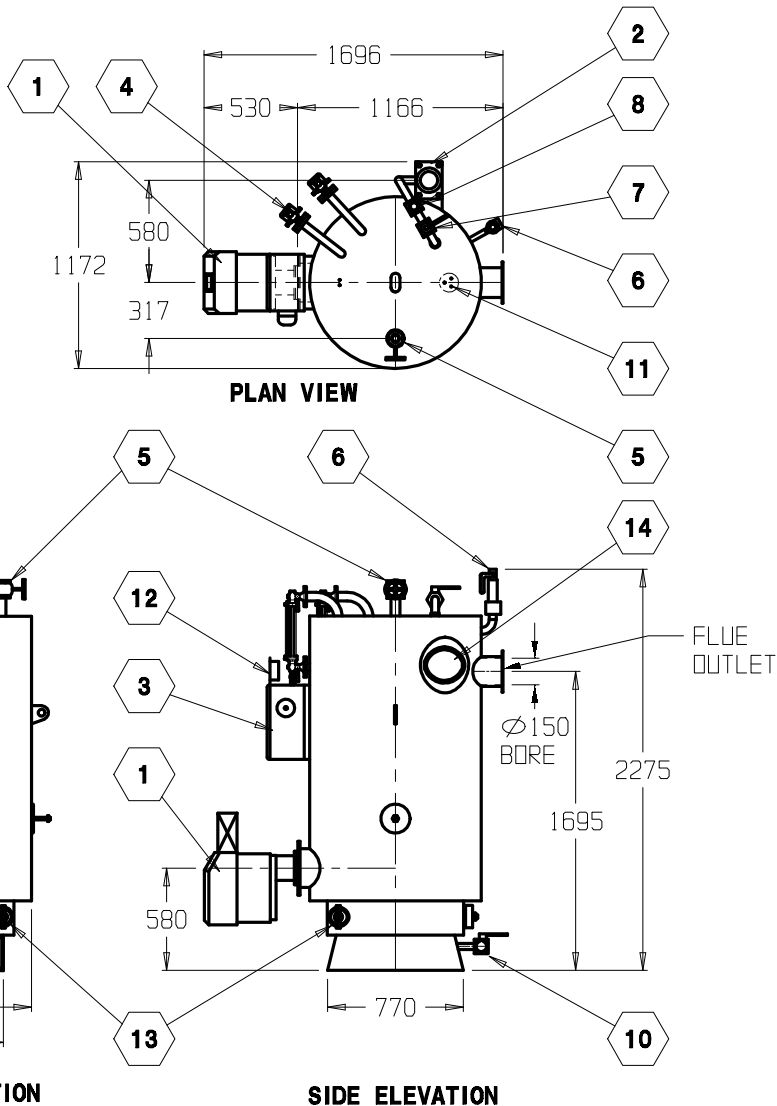
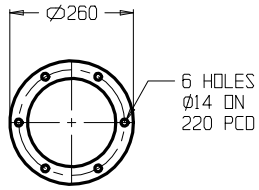
HUNT BOILERS

A division of Forbes (Aust) Pty Ltd

THIS DRAWING WAS PREPARED BY HUNT BOILERS. THE INFORMATION IT CONTAINS IS CONFIDENTIAL AND MUST NOT BE USED, DISCLOSED OR REPRODUCED WITHOUT WRITTEN AUTHORITY.

ALL DIMENSIONS IN MILLIMETRES	DRAFT P.C.H.	PART # VSL200GA	A4
DO NOT SCALE THIS DRAWING	DATE 19/12/96	TITLE/PART Alfarel VSL200 (220kW) Vertical tubeless steam boiler	
COMPUTER AIDED DRAFT	PASSED **		

FLUE FLANGE DETAIL



SPECIFICATIONS:

VERTICAL TUBELESS STEAM BOILER
 MODEL; VS200/700 kPa
 KILOWATT RATING; 200
 CLASS 2B VESSEL AS1228, TABLE 1.5

OPERATING PRESSURE; 700 kPa
 DESIGN PRESSURE; 750 kPa
 EVAPORATION; 319.4 kg/hr
 INPUT; 900 Mj/hr
 OUTPUT; 720 Mj/hr
 DIESEL OIL; 23.1 L/hr
 L.P.G.; 35.1 L/hr
 NATURAL GAS; 23.2 M³/hr
 HEATING SURFACE; 6.65 M²
 SHIPPING WEIGHT; 1553 KILOGRAMS
 FLOODED CAPACITY; 525 LITRES
 OPERATING CAPACITY; 369 LITRES
 FOOTPRINT AREA; 1155 CM²

NOTE: ALL CONNECTIONS FOR SERVICES ARE THREADED BSP

ITEM	DESCRIPTION	MANUFACTURER	MODEL	SIZE	QTY
14	STEAM SPACE DOOR	HUNT	225 x 180		1
13	WATER SPACE DOOR	HUNT	115 x 90		3
12	PRESSURE GAUGE	DOBBIE	GP0-2500	100	1
11	WATER LEVEL PROBE	HUNT	WLPH0000		3
10	BLOWDOWN VALVE	PEGLER	P.H.310	25NB	1
9	CHECK VALVE VERT	TOYO	FIG 230	25NB	1
8	CHECK VALVE HORZ	JOHNS	FIG 521	25NB	1
7	FEEDWATER VALVE	PINTOSI	FIG 2010	25NB	1
6	SAFETY VALVE	CONSOLIDATED	FIG 1543	20NB	1
5	MAIN STEAM VALVE	JOHNS	FIG 501	25NB	1
4	GAUGE GLASS MOUNT	KLINGER	AB12	20NB	2
3	CONTROL PANEL	HUNT	EPANEL50		1
2	PUMP	GRUNDFOS	CR1-17	25NB	1
1	BURNER	SAACKE	250GE		1